

TEMPERATURE
Zona D

Bionaz - Place Moulin - Quota 1979 m s.l.m.
Courmayeur - Ferrachet - Quota 2290 m s.l.m.
Courmayeur - Lex Blanche - Quota 2162 m s.l.m.
Courmayeur - Mont de la Saxe - Quota 2076 m s.l.m.
Courmayeur - Pré-de-Bard - Quota 2040 m s.l.m.
La Thuile - Foillex - Quota 2042 m s.l.m.
La Thuile - La Grande Tête - Quota 2430 m s.l.m.
La Thuile - Villaret - Quota 1488 m s.l.m.
Morgex - Lavancher - Quota 2842 m s.l.m.
Ollomont - By - Quota 2017 m s.l.m.
Pré-Saint-Didier - Capoluogo - Quota 996 m s.l.m.
Pré-Saint-Didier - Plan Praz - Quota 2044 m s.l.m.
Saint-Oyen - Moulin - Quota 1310 m s.l.m.
Saint-Rhémy-en-Bosses - Crévacol - Quota 2018 m s.l.m.
Saint-Rhémy-en-Bosses - Gran San Bernardo - Quota 2360 m s.l.m.
Saint-Rhémy-en-Bosses - Mont-Botsalet - Quota 2500 m s.l.m.
Valgrisenche - Menthieu - Quota 1859 m s.l.m.
Valpelline - Chosoz - Quota 1029 m s.l.m.
Valtournenche - Cime Bianche - Quota 3100 m s.l.m.
Valtournenche - Lago Goillet - Quota 2541 m s.l.m.
Valtournenche - Grandes Murailles - Quota 2566 m s.l.m.
Morgex - Capoluogo - Quota 938 m s.l.m.
Courmayeur - Dolonne - Quota 1200 m s.l.m.
Bionaz - Moulin - Quota 1594 m s.l.m.
Valtournenche - Breuil Cervinia - Quota 1998 m s.l.m.
Informazioni ...

TEMPERATURE
Zona D

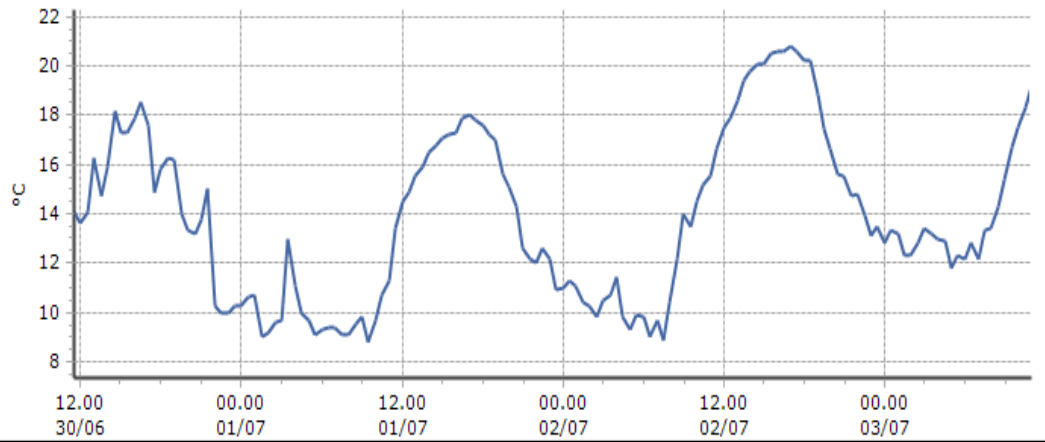
Bionaz - Place Moulin - Quota 1979 m s.l.m.

DATI RILEVATI

Ultime 6 ore

Trend temperature ultime 72 ore

Ora (locale)	Temperatura (°C)
06.00	12.2
07.00	12.2
08.00	13.4
09.00	15.4
10.00	17.5
11.00	19.2



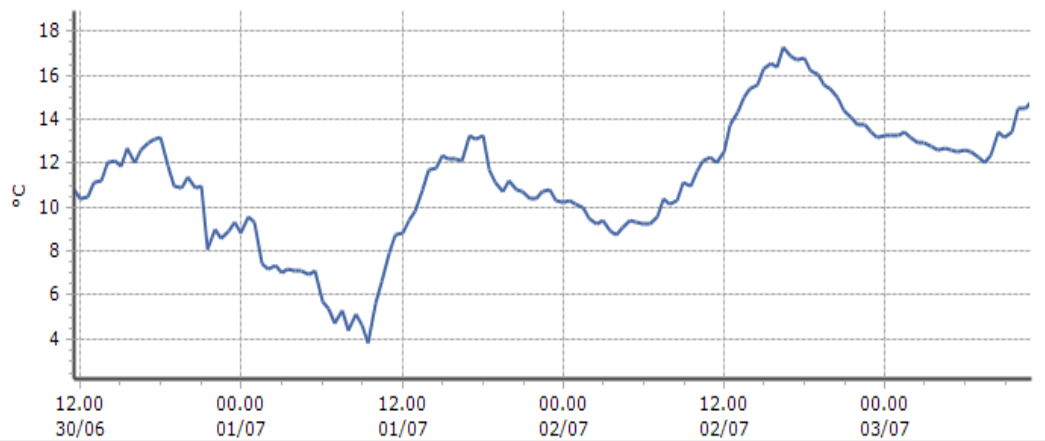
Courmayeur - Ferrachet - Quota 2290 m s.l.m.

DATI RILEVATI

Ultime 6 ore

Trend temperature ultime 72 ore

Ora (locale)	Temperatura (°C)
06.00	12.6
07.00	12.3
08.00	12.4
09.00	13.2
10.00	14.5
11.00	14.8



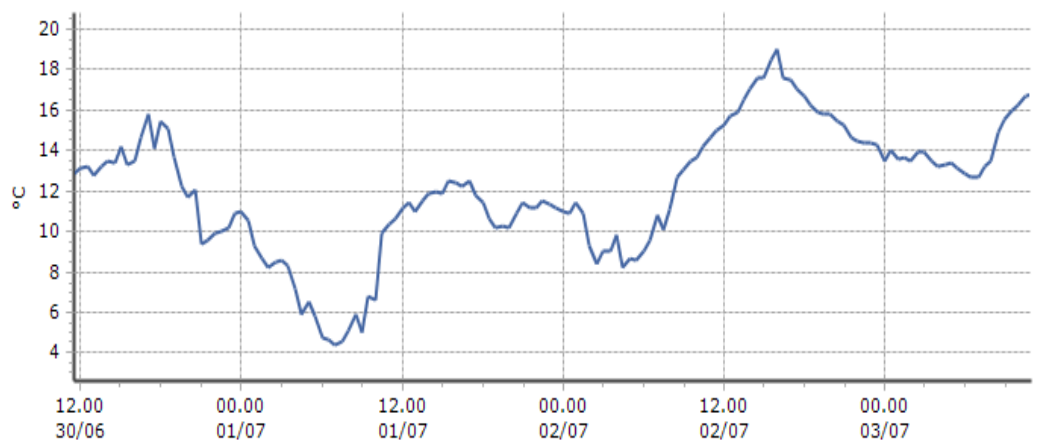
Courmayeur - Lex Blanche - Quota 2162 m s.l.m.

DATI RILEVATI

Ultime 6 ore

Trend temperature ultime 72 ore

Ora (locale)	Temperatura (°C)
06.00	12.9
07.00	12.7
08.00	13.5
09.00	15.5
10.00	16.2
11.00	16.8



TEMPERATURE
Zona D

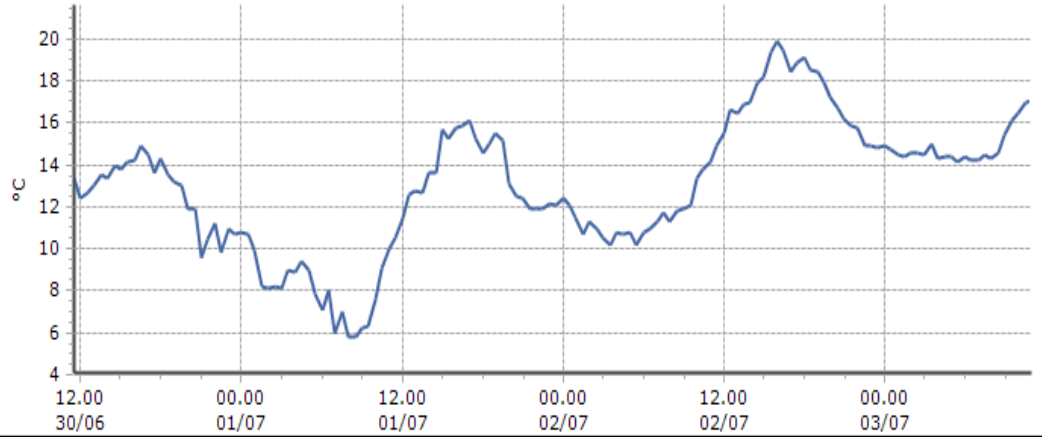
Courmayeur - Mont de la Saxe - Quota 2076 m s.l.m.

DATI RILEVATI

Ultime 6 ore

Trend temperature ultime 72 ore

Ora (locale)	Temperatura (°C)
06.00	14.4
07.00	14.2
08.00	14.3
09.00	15.4
10.00	16.5
11.00	17.1



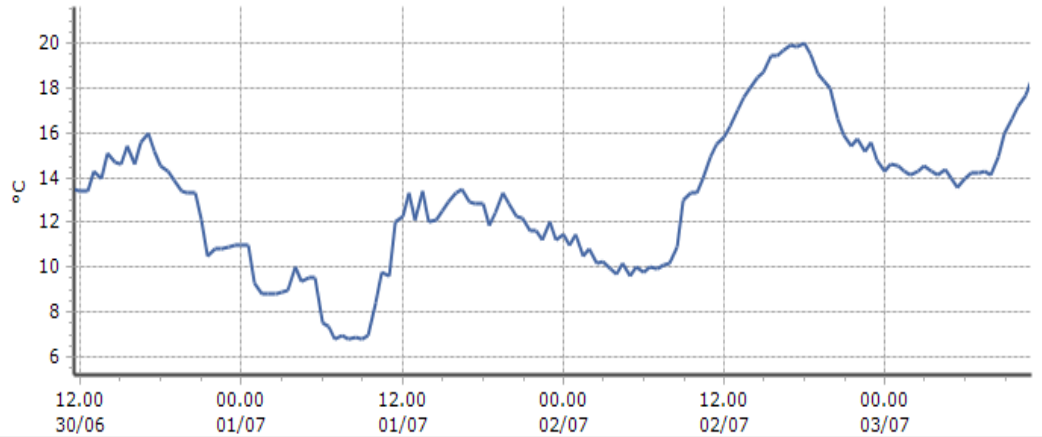
Courmayeur - Pré-de-Bard - Quota 2040 m s.l.m.

DATI RILEVATI

Ultime 6 ore

Trend temperature ultime 72 ore

Ora (locale)	Temperatura (°C)
06.00	14.0
07.00	14.2
08.00	14.1
09.00	16.0
10.00	17.2
11.00	18.4



La Thuile - Foillex - Quota 2042 m s.l.m.

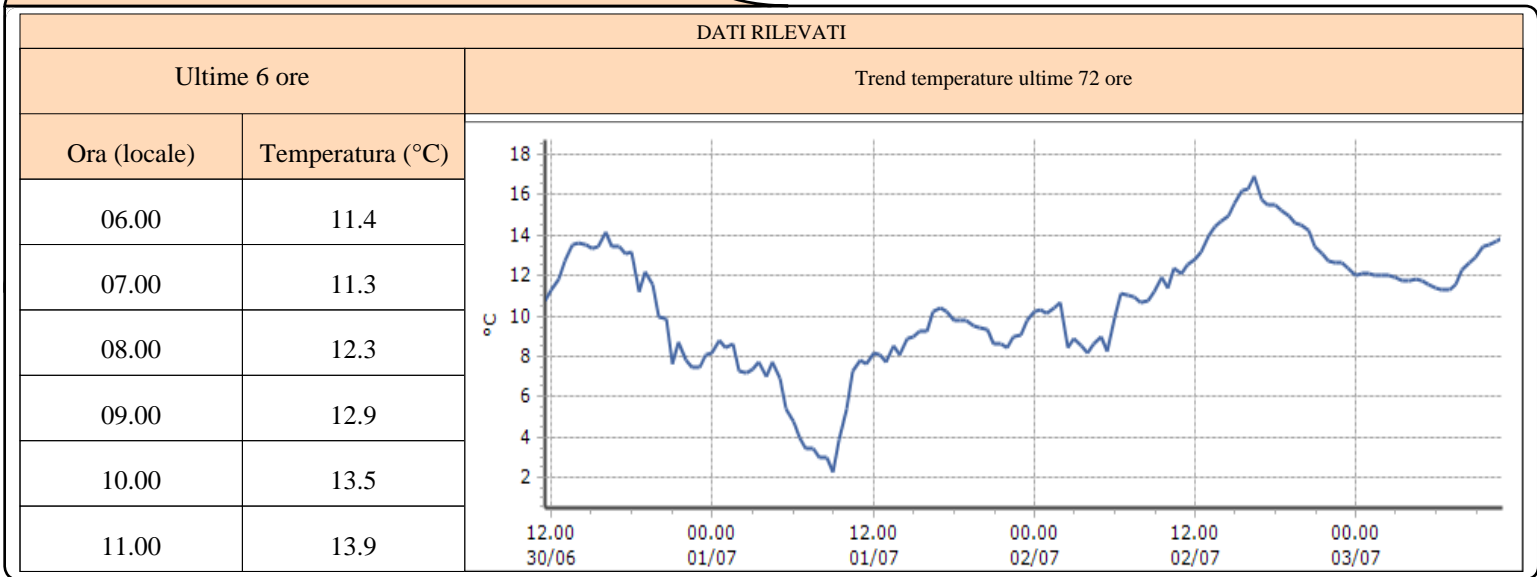
DATI RILEVATI

Ultime 6 ore

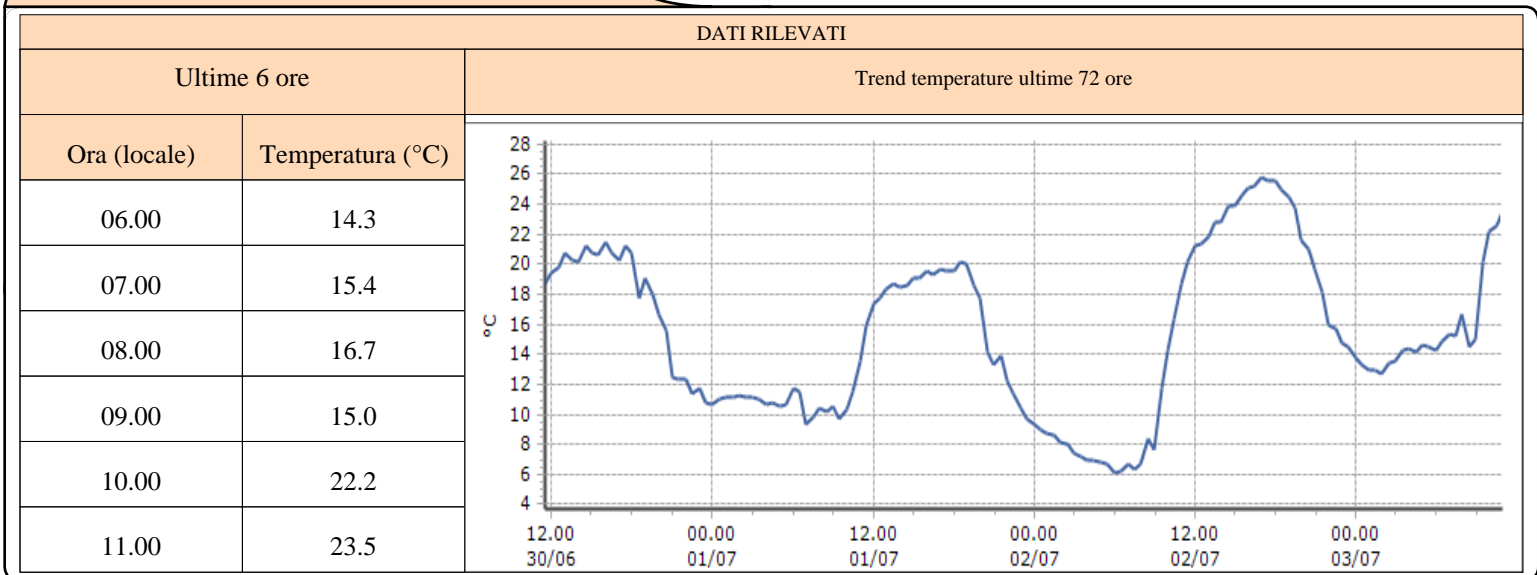
Ora (locale)	Temperatura (°C)
---	---
---	---
---	---
---	---
---	---
---	---

TEMPERATURE
Zona D

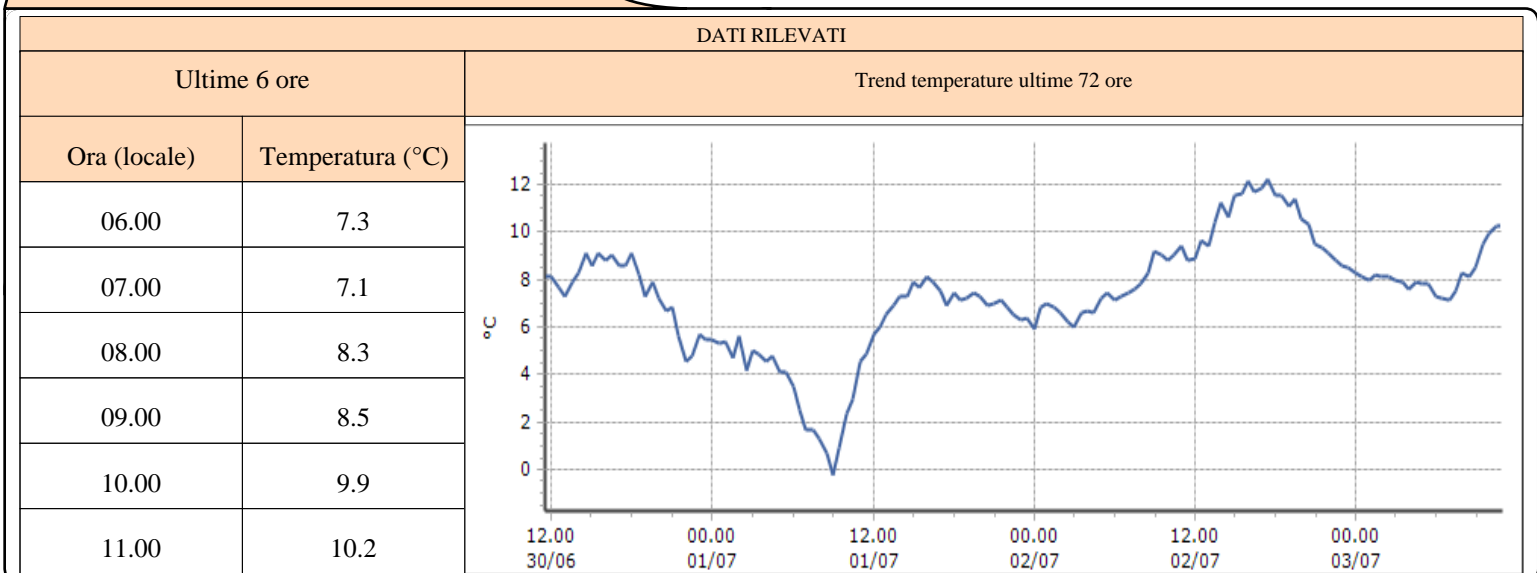
La Thuile - La Grande Tête - Quota 2430 m s.l.m.



La Thuile - Villaret - Quota 1488 m s.l.m.



Morgex - Lavancher - Quota 2842 m s.l.m.



TEMPERATURE
Zona D

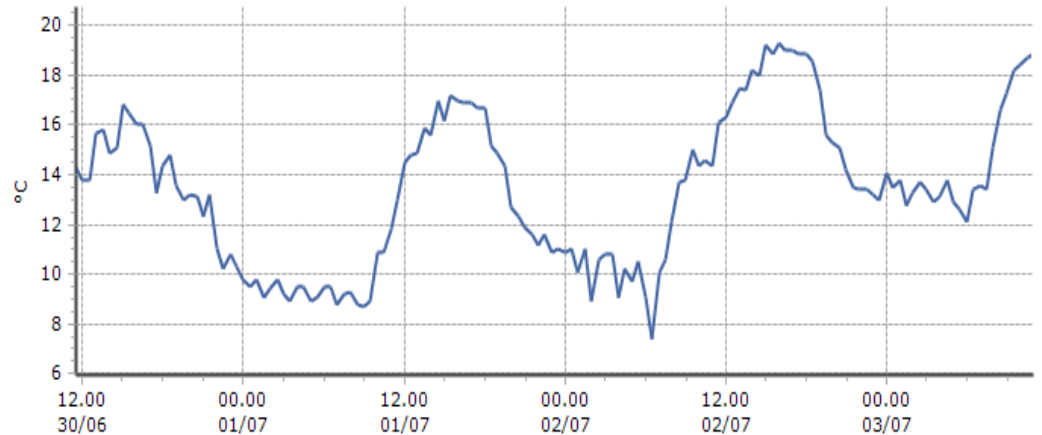
Ollomont - By - Quota 2017 m s.l.m.

DATI RILEVATI

Ultime 6 ore

Trend temperature ultime 72 ore

Ora (locale)	Temperatura (°C)
06.00	12.1
07.00	13.6
08.00	15.1
09.00	17.3
10.00	18.4
11.00	18.9



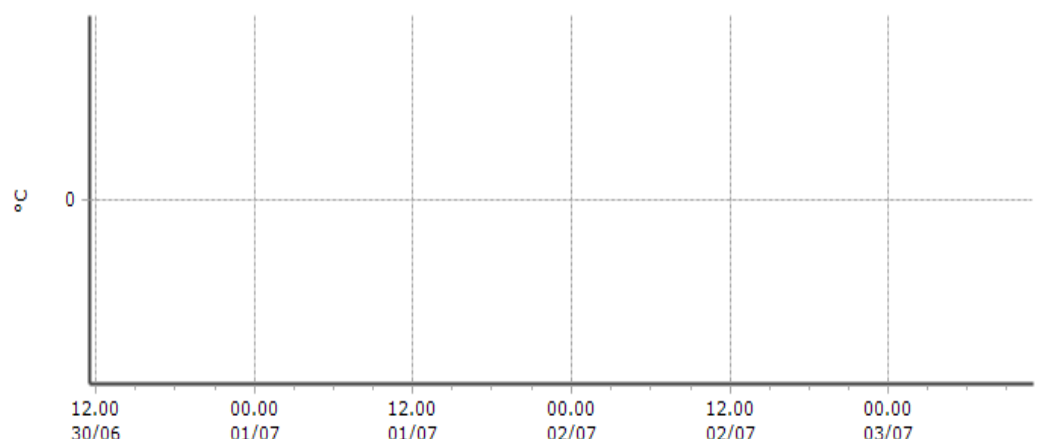
Pré-Saint-Didier - Capoluogo - Quota 996 m s.l.m.

DATI RILEVATI

Ultime 6 ore

Trend temperature ultime 72 ore

Ora (locale)	Temperatura (°C)
06.00	
07.00	
08.00	
09.00	
10.00	
11.00	



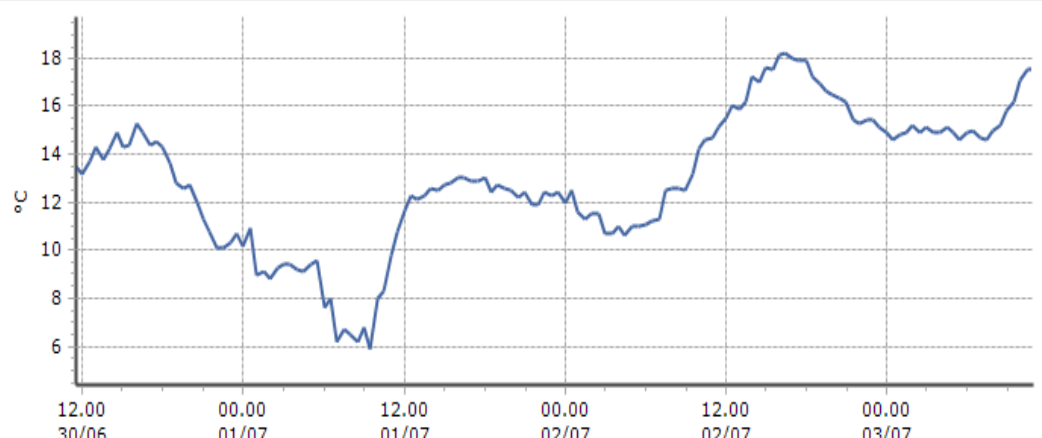
Pré-Saint-Didier - Plan Praz - Quota 2044 m s.l.m.

DATI RILEVATI

Ultime 6 ore

Trend temperature ultime 72 ore

Ora (locale)	Temperatura (°C)
06.00	14.9
07.00	14.7
08.00	15.0
09.00	15.8
10.00	17.1
11.00	17.5



TEMPERATURE
Zona D

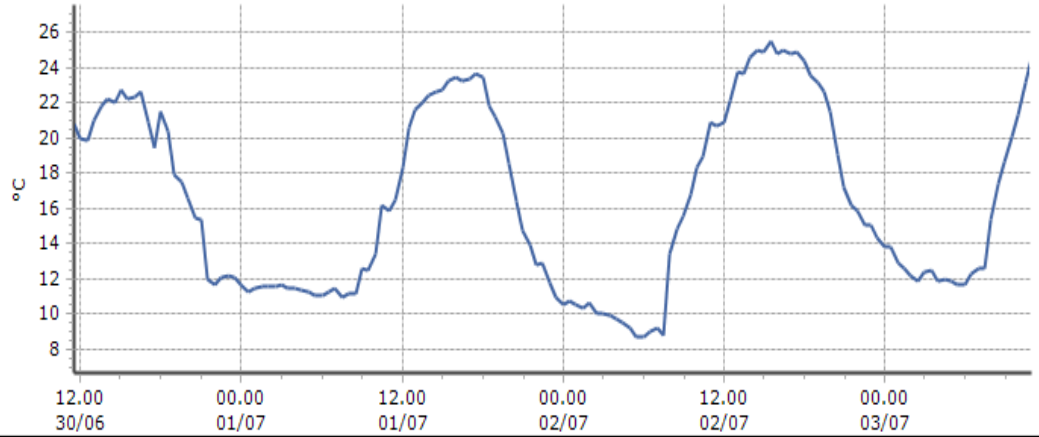
Saint-Oyen - Moulin - Quota 1310 m s.l.m.

DATI RILEVATI

Ultime 6 ore

Trend temperature ultime 72 ore

Ora (locale)	Temperatura (°C)
06.00	11.7
07.00	12.6
08.00	15.4
09.00	18.6
10.00	21.3
11.00	24.6



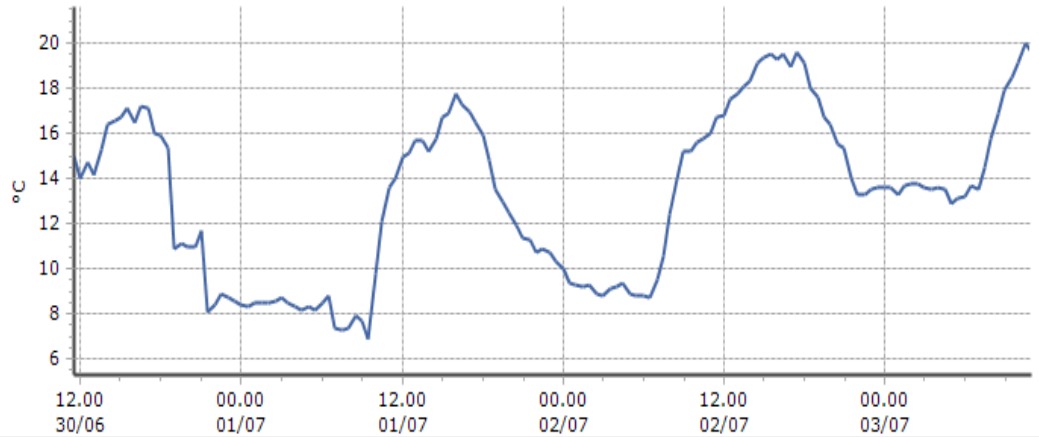
Saint-Rhémy-en-Bosses - Crévacol - Quota 2018 m s.l.m.

DATI RILEVATI

Ultime 6 ore

Trend temperature ultime 72 ore

Ora (locale)	Temperatura (°C)
06.00	13.2
07.00	13.5
08.00	15.8
09.00	17.9
10.00	19.1
11.00	19.6



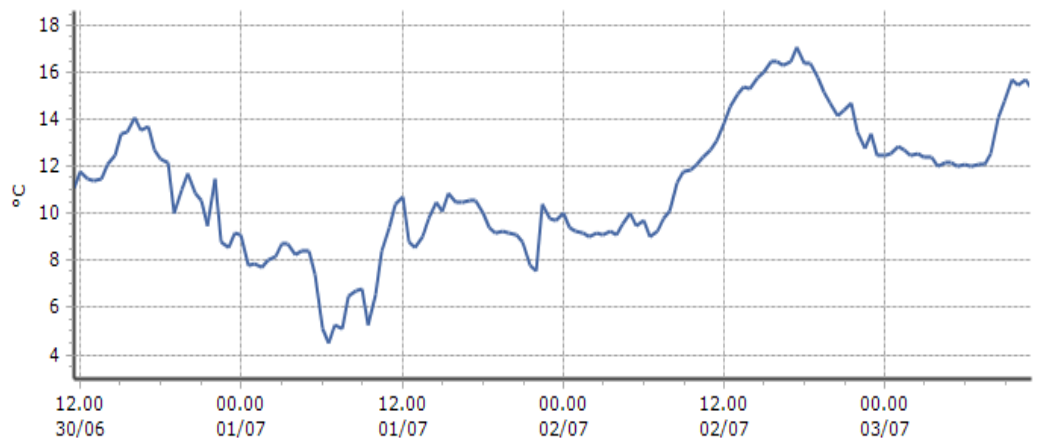
Saint-Rhémy-en-Bosses - Gran San Bernardo - Quota 2360 m s.l.m.

DATI RILEVATI

Ultime 6 ore

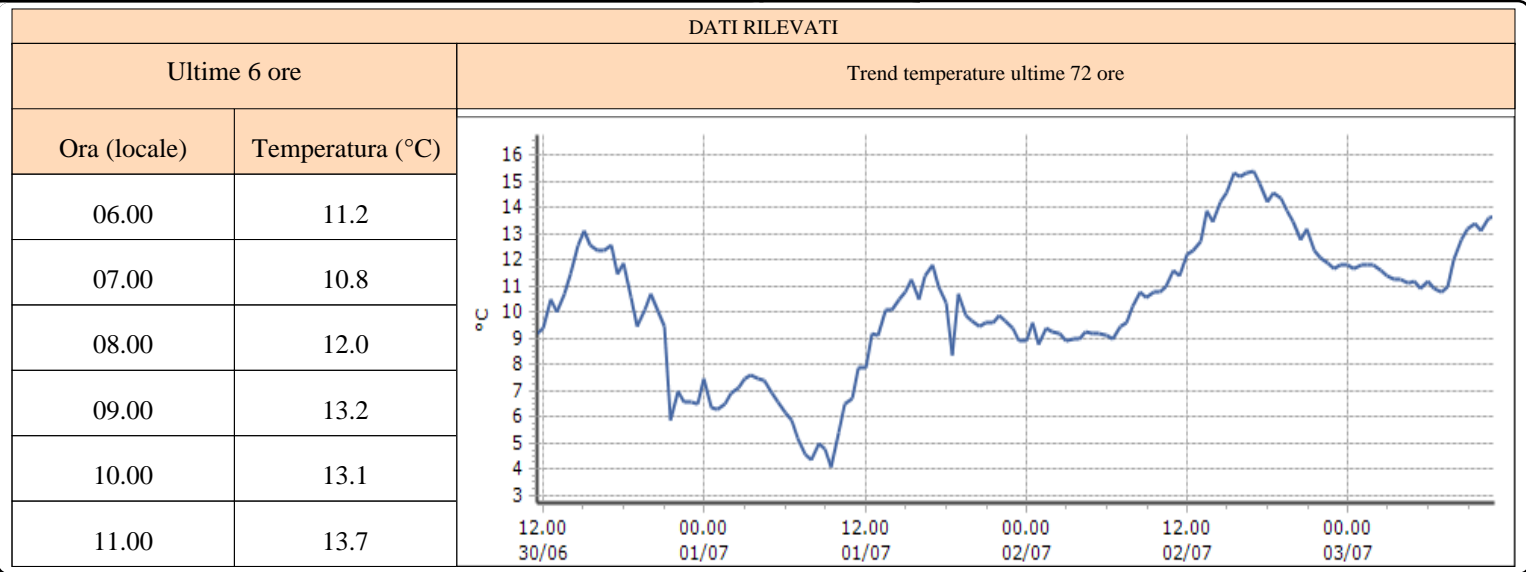
Trend temperature ultime 72 ore

Ora (locale)	Temperatura (°C)
06.00	12.1
07.00	12.1
08.00	12.6
09.00	14.8
10.00	15.5
11.00	15.3

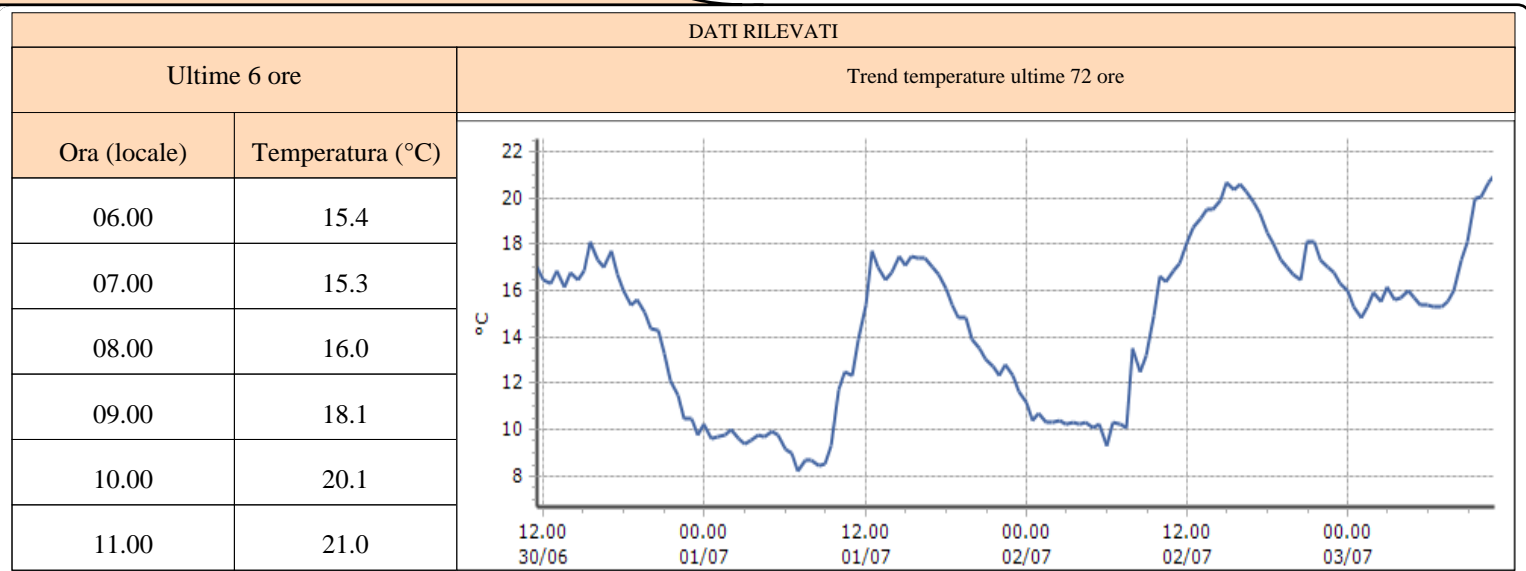


TEMPERATURE
Zona D

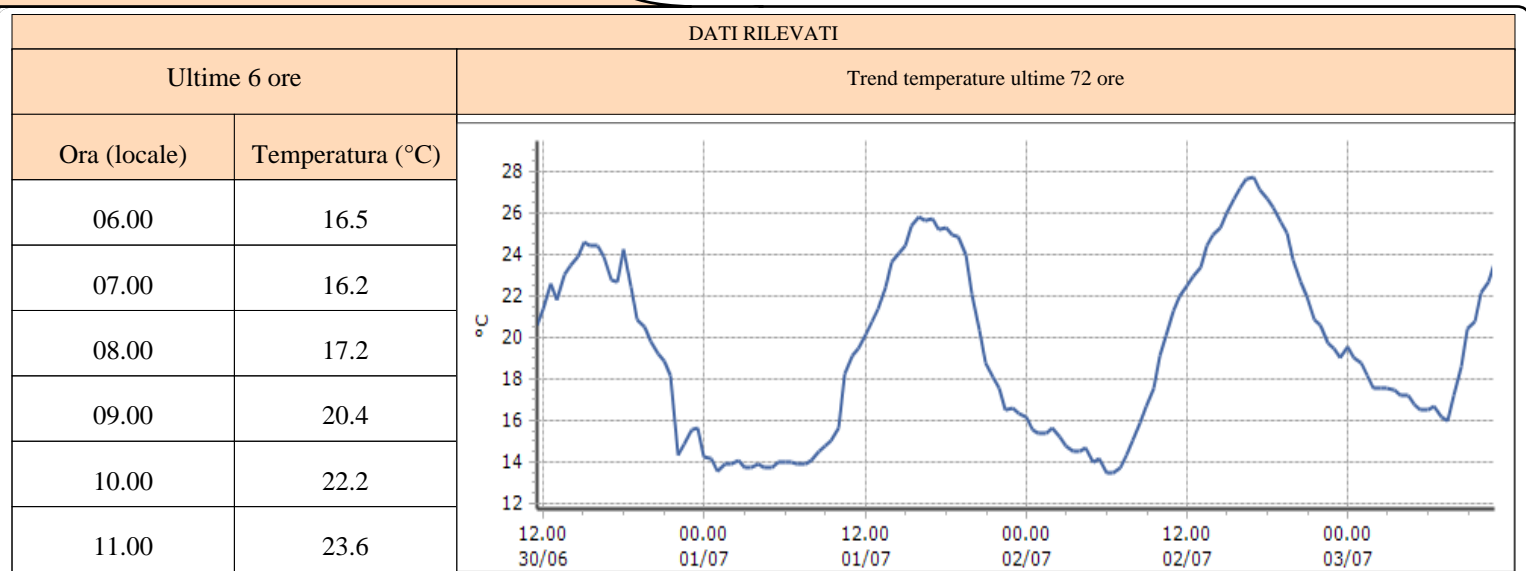
Saint-Rhémy-en-Bosses - Mont-Botsalet - Quota 2500 m s.l.m.



Valgrisenche - Menthieu - Quota 1859 m s.l.m.



Valpelline - Chosoz - Quota 1029 m s.l.m.



TEMPERATURE
Zona D

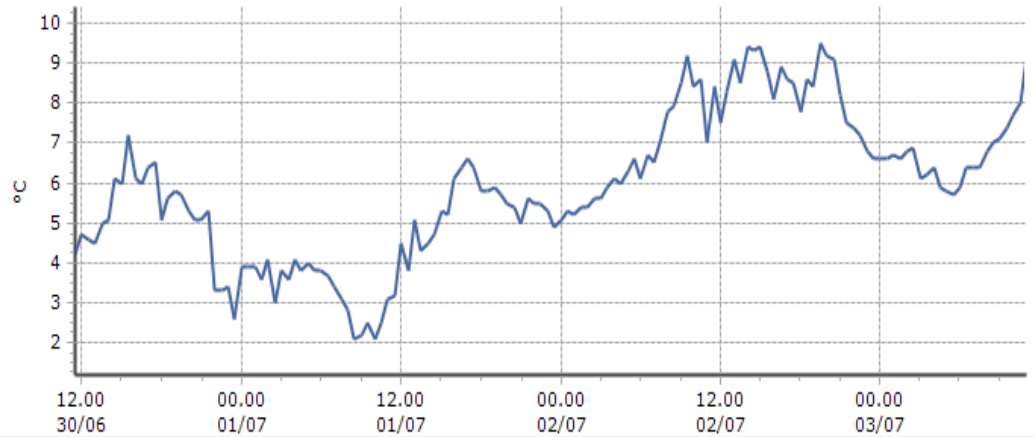
Valtournenche - Cime Bianche - Quota 3100 m s.l.m.

DATI RILEVATI

Ultime 6 ore

Trend temperature ultime 72 ore

Ora (locale)	Temperatura (°C)
06.00	5.9
07.00	6.4
08.00	6.8
09.00	7.1
10.00	7.7
11.00	9.2



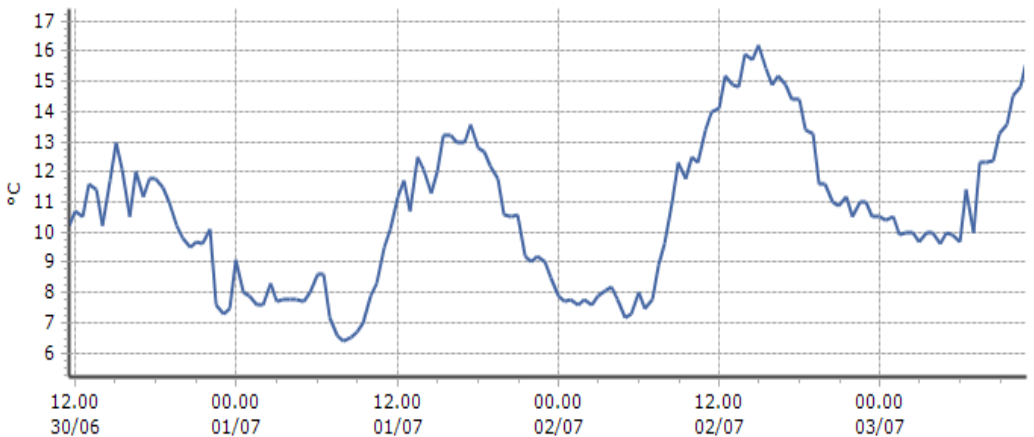
Valtournenche - Lago Goillet - Quota 2541 m s.l.m.

DATI RILEVATI

Ultime 6 ore

Trend temperature ultime 72 ore

Ora (locale)	Temperatura (°C)
06.00	9.7
07.00	10.0
08.00	12.3
09.00	13.3
10.00	14.5
11.00	15.7



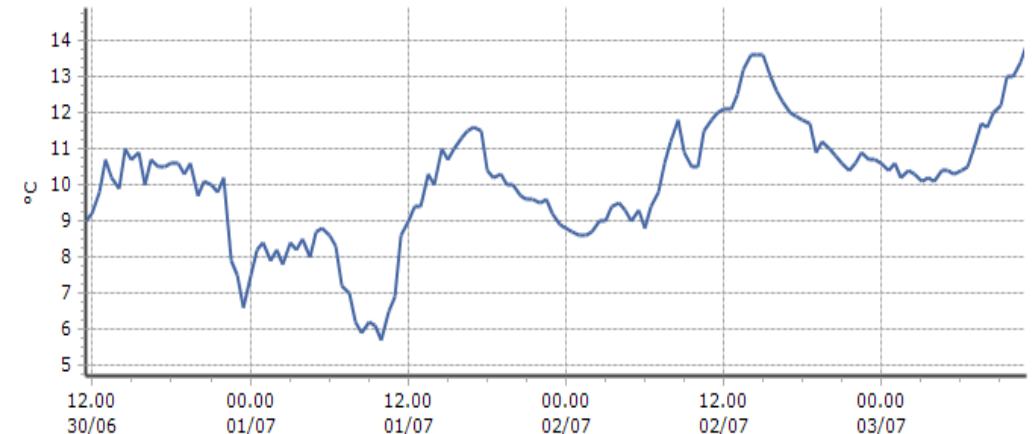
Valtournenche - Grandes Murailles - Quota 2566 m s.l.m.

DATI RILEVATI

Ultime 6 ore

Trend temperature ultime 72 ore

Ora (locale)	Temperatura (°C)
06.00	10.4
07.00	11.0
08.00	11.6
09.00	12.2
10.00	13.0
11.00	13.9



TEMPERATURE
Zona D

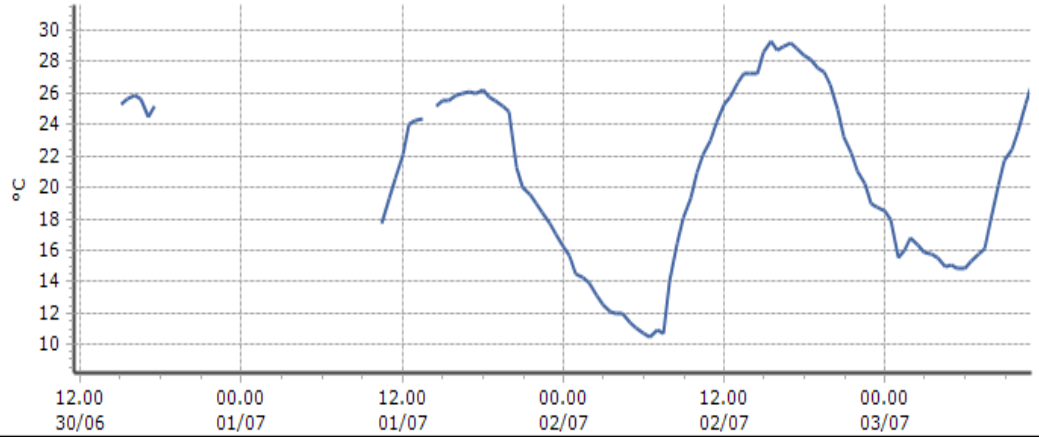
Morgex - Capoluogo - Quota 938 m s.l.m.

DATI RILEVATI

Ultime 6 ore

Trend temperature ultime 72 ore

Ora (locale)	Temperatura (°C)
06.00	14.8
07.00	15.8
08.00	18.0
09.00	21.7
10.00	23.6
11.00	26.6



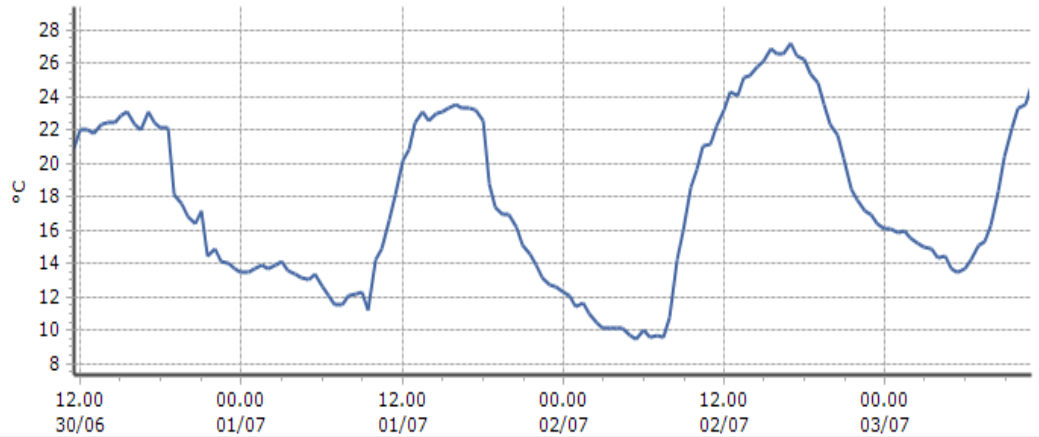
Courmayeur - Dolonne - Quota 1200 m s.l.m.

DATI RILEVATI

Ultime 6 ore

Trend temperature ultime 72 ore

Ora (locale)	Temperatura (°C)
06.00	13.7
07.00	15.1
08.00	16.3
09.00	20.4
10.00	23.3
11.00	24.7



Bionaz - Moulin - Quota 1594 m s.l.m.

DATI RILEVATI

Ultime 6 ore

Ora (locale)	Temperatura (°C)
---	---
---	---
---	---
---	---
---	---
---	---

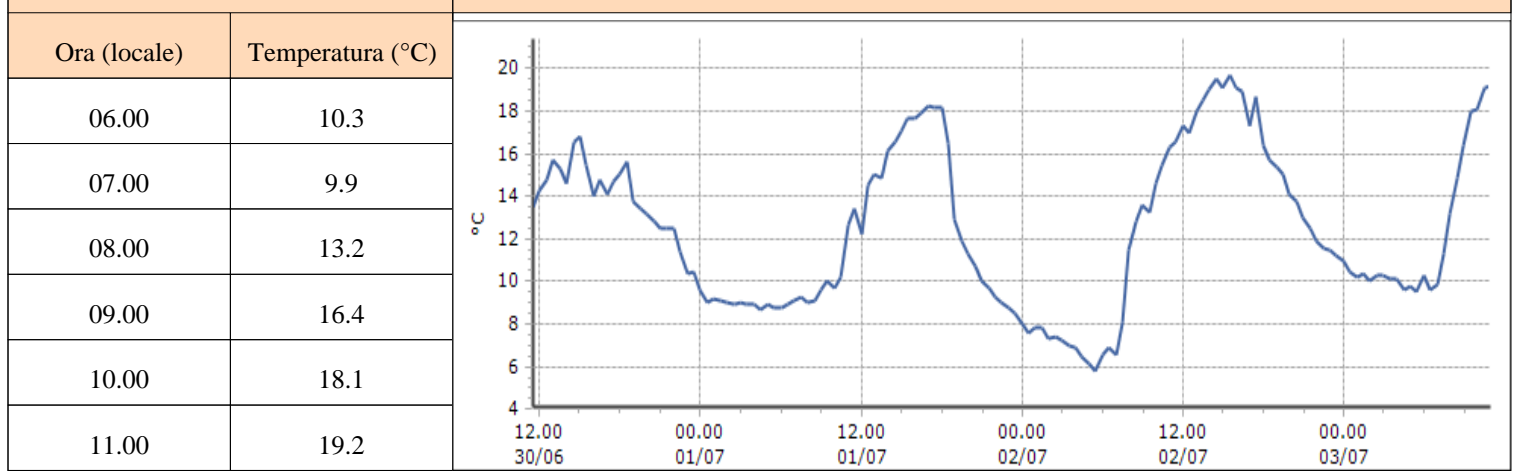
TEMPERATURE
Zona D

Valtournenche - Breuil Cervinia - Quota 1998 m s.l.m.

DATI RILEVATI

Ultime 6 ore

Trend temperature ultime 72 ore



TEMPERATURE

I dati riportati sono pubblicati in tempo reale, con cadenza oraria, e NON sono, perciò, validati*.

Ultime 6 ore: si riporta nella tabella il dato puntuale relativo alle ultime 6 ore a partire dall'ultimo dato disponibile.

Trend temperature ultime 72 ore: si riporta il dato termometrico a cadenza semioraria relativo alle ultime 72 ore.

I dati sono espressi in gradi centigradi (°C).

* I dati non possono quindi subire il processo di validazione che consente l'eliminazione di eventuali anomalie/errori strumentali. Di conseguenza il loro utilizzo deve essere fatto con opportuno senso critico confrontando anche i dati tra stazioni diverse, ma simili per contesto geografico.